

VIPCAM – intelligent high resolution day/night network camera perfected for video applications



Our high resolution day/night network camera with an **automatic IR-cut filter** delivers clear sharp pictures even in areas with widely varying light conditions. - Perfect for use near large areas of glass or in entrance halls. It produces no vertical smear effects in the image even when bright lights such as car headlights fall directly on the camera.

The first in a new range of products in GEUTEBRÜCK's customary high quality. With a **high level of user friendliness and the complete range of high performance DSP capabilities providing many functions to relieve the network and reduce storage requirements. Storage costs go down – without compromising functionality or security. The integrated intelligent video analysis qualifies the image content and alerts in critical situations.**



VIPCAM series

- | Relieve networks and reduce storage requirements
- | Intelligent video analysis
- | Security against manipulation by hackers



Conventional camera



VIPCAM-DN101/PX:
No vertical smear effects in the picture



For a high level of user friendliness



VIPCAM-DN101/PX:
*Crystal clear, sharp pictures
in very bright or dark conditions,
near large areas of glass or in entrance halls.*

Easy remote setup

VIPCAM cameras are fully integrated into the GeViScope and re_porter system landscape. The setup of the camera is performed quickly and easily in GSC/Setup via LAN.

Predefined profiles for different lighting conditions.

Use the predefined profiles for different lighting conditions and load them fully automatically – time-dependent or event-based – from the video management system directly into the camera.



Conventional camera



VIPCAM-DN101/PX: No overshine



Intelligent video analysis – See what matters, nothing less, nothing else!

Video systems generate a large amount of image data that cannot be economically analyzed by humans. It is therefore important to filter out the relevant images for the user from this mass of information and to automatically guide the attention of security staff to critical situations.

Intelligent video analysis – directly in the camera:

Activity Detection (AD)

Video motion detection for indoor as well as selected outdoor applications. Extremely low false alarm rate thanks to reliable suppression of global influences.

Video Motion Detection (VMD)

Professional video motion detection for outdoor applications detects moving objects analyzing direction and speed so that 'allowed' motion, for instance exiting, does not trigger a false alarm.

VIPCAM is completely integrated into the GEUTEBRÜCK system architecture.

Depending on the platform used, further video analysis algorithms are available in combination with GeViScope or re_porter:

CPA – Camera Position Authentication

Sabotage monitoring for analog and IP cameras

VA-Class

For classifying moving objects

Dual-Sensor

Combines both the VMD and VA-Class detection methods for especially critical outdoor environments

VA-Missing

Securing objects against theft

ANPR – Number Plate Recognition

Number plate recognition for entrance control and similar applications



Video analysis application:
Number plate recognition



Video analysis application:
Video Motion Detection



Relief and security for networks and storage capacity

Highest level of security against unauthorized access

As opposed to most conventional IP cameras, VIPCAM operates without internal web servers and thus offers the highest level of security against unauthorized access. The MPEG4CCTV compression method, which has been optimized for security applications, is also absolutely secure against manipulation and cannot be decrypted by unauthorized parties.

MPEG4CCTV

Compression and decompression in real time with latencies below 120 ms. Outstanding image quality precisely when you need it. Relieves network infrastructure and reduces storage requirements. Data export is password protected and absolutely manipulation-proof for evidential quality documentation admissible in a court of law.

Region of Non-Interest (RONI)

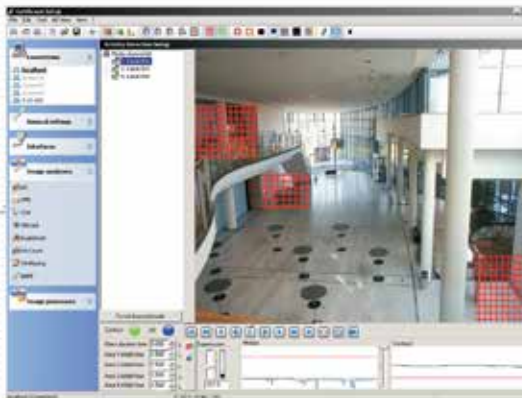
Irrelevant areas of an image can be defined flexibly so they can then be processed with lower resolution and higher compression.

Dynamic Live Streaming (DLS)

Only requested data are transmitted. Live images are sent in precisely the size the user demands. If the viewing window is enlarged, then more data are sent; if it shrinks, then less data are sent.

Intelligent Compression Dynamics (ICD)

Images without motion usually do not contain any information that is relevant to the user, so are processed with low picture rates and low quality. Images with motion are delivered in real time and in the desired resolution and quality.



Video analysis application:
Activity-Detection



re_porter_bank-4
re_porter_bank-8
re_porter_bank-12
re_porter_bank-16



Description

Branch specific system reporter_bank. The Flexible Hybrid Recorder for digital storage and transmission of video signals based on the GEUTEBRÜCK optimized MPEG4CCTV-Standard. Especially suitable for integrating ATM-Systems via serial interface. The unit comes preconfigured as a plug & play system in accordance with the BGV-Kassen standard. The unit can handle up to 4, 8, 12 or 16 analog or digital video signals and 1 audio channel. It offers a new and versatile backup function and is equipped with a preinstalled Activity Detection. The unit supports the GEUTEBRÜCK DualChannelStreaming method of simultaneously recording picture and audio data in live quality as well as sending a livestream out to other systems via the 1 Gbit Ethernet port. Based on that the unit offers all required functionalities needed for a real virtual digital matrix switcher on TCP/IP basis. The recording and display of IP-cameras from different vendors are supported. Technical specifications: 2 x 512 MByte RAM main memory, VGA out, 16 control inputs, 8 relays outputs, incl. Windows XP embedded, alarm controllable, freely definable viewers, time management, pan/tilt-camera control and motion detection included. The system already includes licences for a simultaneous database access of up to 10 users and is preinstalled for handling database sizes of up to 2 TB. Max. 2 S-ATA hard disks can be installed into the unit. 1 x RS-232, 8 x USB 2.0 (2 front). Height: 3 HU Basic unit w/o S-ATA hard disks - configurable. German bank regulation BGV certified!



Professional peripheral IP components

VIPCAM-DN101/PX

Our IP camera – perfected for video applications!



Our high resolution day/night network camera with an **automatic IR-cut filter** delivers clear sharp pictures even in areas with widely varying light conditions. - Perfect for use near large areas of glass or in entrance halls. It produces no vertical smear effects in the image even when bright lights such as car headlights fall directly on the camera. The first in a new range of products in GEUTEBRÜCK's customary high quality, it requires little servicing. **The complete range of high performance DSP capabilities provide many functions to relieve the network and reduce storage requirements.**

VIPCAM-GNSD671

Indoor Day/Night IP Speeddome



Remote-controllable extremely high-resolution 1/4" Day/Night IP dome for indoor use.

With **23x motor zoom lens** and **motorized IR-cut filter**, suitable for use under normal and infrared lighting conditions.

P/T proportional to zoom ratio, text insertion depending on position, 256 pre-set positions (JVC protocol) with freeze function, slow shutter up to 33x, wide dynamic, TCP/IP port, digital flip and password protected OSD-menu. Can be integrated directly and without license into the video system architecture from GEUTEBRÜCK. Pictures are transmitted in accordance with the GEUTEBRÜCK MPEG4CCTV format at 25 pictures/s.

VIPCAM-GNSD861

Day/Night IP Speeddome for indoor and outdoor use



Remote-controllable extremely high-resolution 1/4" Day/Night IP dome in weatherproof housing for outdoor and indoor use.

With **23x motor zoom lens** and **motorized IR-cut filter**, suitable for use under normal and infrared lighting conditions.

P/T proportional to zoom ratio, text insertion depending on position, 256 pre-set positions (JVC protocol) with freeze function, slow shutter up to 33x, wide dynamic range, TCP/IP port, digital flip and password protected OSD-menu. Can be integrated directly and without license into the video system architecture from GEUTEBRÜCK. Pictures are transmitted in accordance with the GEUTEBRÜCK MPEG4CCTV format at 25 pictures/s.



VIPCAM-GNSD881

Day/Night IP Speeddome for indoor and outdoor use



Remote-controllable extremely high-resolution 1/4" Day/Night IP dome in weather-proof housing for outdoor and indoor use.

With **36x motor zoom lens** and **motorized IR-cut filter**, suitable for use under normal and infrared lighting conditions. P/T proportional to zoom ratio, text insertion depending on position, 256 pre-set positions (JVC protocol) with freeze function, slow shutter up to 33x, wide dynamic range, TCP/IP port, digital flip and password protected OSD-menu. Can be integrated directly and without license into the video system architecture from GEUTEBRÜCK. Pictures are transmitted in accordance with the GEUTEBRÜCK MPEG4CCTV format at 25 pictures/s.

CAM2IP

Our compact video encoder



Integrate your analog cameras into the network with no hassle and put the intelligent video management where it can relieve the strain on the network the most – close to the camera. Analog interior camera or a day/night camera that is especially suited for use outside – **CAM2IP delivers excellent image quality to the network without putting an unnecessary strain on the network.**

MBeg/GCT-3X-LAN

Multifunctional operator keyboard with LAN interface



The versatile operator keyboard allows full control of live viewing: camera display, PTZ control and alarm handling. The illuminated graphic display with its programmable softkeys makes operation clear and straightforward for the user, who therefore always has every situation under control – supported by the reliable user-friendly joystick with integrated zoom function.



GFD-611



Description

Very high resolution 1/3" color fix dome in housing made of molded plastic with integrated lens and adjustable focal length from 3.0 - 9.0 mm. The camera is equipped with an automatic white balance (AWB) function. Because of its flexible 3 axial camera modul adjustment the dome can be fixed to any normal or angular ceiling and even directly on the wall.

Sensor: Sony HQ1 Super-HAD-CCD, 752 x 582 pixel.

Resolution: 540 TV lines (horizontal)

Light sensitivity color: 0.65 Lux (F1.2 50IRE)

Synchronization: Internal / Line lock (24 V AC)

S/N ratio: 50 dB; AGC: max. 30 dB

Operating voltage: 24 V AC / 12 V DC +- 10 %

Power consumption: max. 2.8 W (approx. 235 mA)

Operating temperature: - 10 °C up to + 50 °C

Dimensions in mm (diameter x H): 120 x 100

Optional available: Mounting bracket for false ceilings GFD/BFC-001 (5.04905)

Certified in accordance with German banks regulation (BGV-Kassen).

GFD-611/PX



Description

High resolution WDR-PIXIM 1/3" color fix dome in housing made of molded plastic with integrated lens and adjustable focal length from 3.0 - 9.0 mm. The camera is equipped with automatic white balancing (AWB) and provides an on screen setup function. Because of its flexible 3 axial camera modul adjustment the dome can be fixed to any normal or angular ceiling and even directly on the wall. Pixim Orca Sensor, 720 x 540 pixel.

Resolution: > 504 TV lines (horizontal)

Light sensitivity color: 0.95 Lux (F1.2 50IRE)

Synchronization: Internal / Line lock (24 V AC)

S/N ratio: > 42 dB; WDR: 120 dB / 17 bit

Operating voltage: 24 V AC / 12 V DC +- 10 %

Power consumption: max. 3.0 W (approx. 250 mA)

Operating temperature: - 10 °C up to + 50 °C

Dimensions in mm (diameter x H): 120 x 100

Optional available: Mounting bracket for false ceilings GFD/BFC-001 (5.04905). Certified in

accordance with German banks regulation (BGV-Kassen).